

Q-TAG® CLM DOC LR USER MANUAL

1. Check, if the device is ready for operation.

- The device is either blank or has been started and is in the OFF state.
- The housing is free from damages.
- The protecting cap is on the USB interface.

Note: If «OFF» is flashing on the display, it means that the battery is almost empty. Therefore do not use the device anymore.



2. If the device is OK, press the START/STOP button for 3 seconds to activate the device. The OK symbol will be shown and a small black point starts flashing.



3. Put the Q-tag® CLm doc LR into the cooling box.

Note: Do not place the Q-tag® CLm doc LR next to the cooling elements.



To allow acclimatization, a **start delay** is configured. The device starts recording the temperature after the completion of the start delay time. The start delay time is displayed by the flashing START and the remaining time of the countdown. Stopping the device during the start period is not possible.



4. After arrival of the shipment at it's destination, press the START/STOP button for 3 seconds and stop the temperature recording.



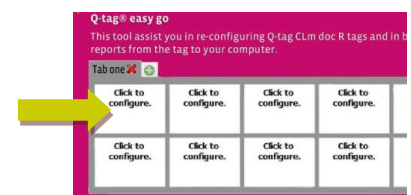
5. The recorded data can be read out by the USB interface.

Note: The files with the recorded data will be available in a PDF or ASCII format.
Important: Connect the device always with the same computer drive (as defined in the operation manual).



6. In order to reset the device for a next usage, click once on the tab in the Software easy go®.

Note: The device needs to be plugged in to your computer.
The device can be read out several times until the Q-tag® CLm doc LR will be re-started.



For more information download the whole user manual
www.berlinger.com/user-manuals

