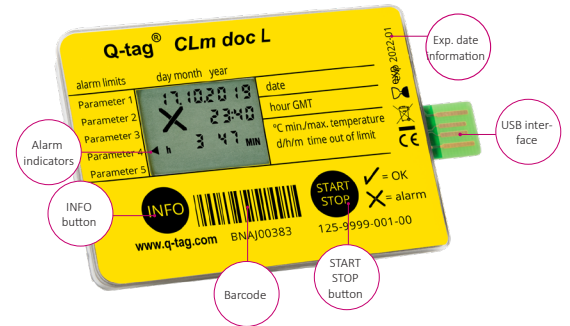
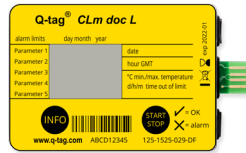


Learn how to **START** and **STOP** a Berlinger Q-tag CLm doc Device and how to **DOWNLOAD** data with a computer.

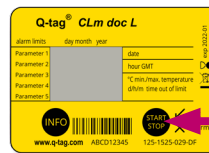
1. State of delivery / sleep mode

Q-tag CLm doc devices will be shipped in the "sleep mode". In this mode the display is blank. This is the state of delivery of the device. The device is not activated, and no data is recorded.



2. Activation

To initiate a shipment, press and hold the START/STOP button until the display starts up. Active recording is shown by the ✓ (OK symbol) or ✗ (ALARM symbol) and the flashing dot on the LCD. If a start delay has been preset, the device starts recording the temperature after the completion of the start delay time. The start delay time is displayed by the flashing START and the remaining time of the countdown.



PRESS AND HOLD the START/STOP button **UNTIL THE DISPLAY STARTS UP**

Start it

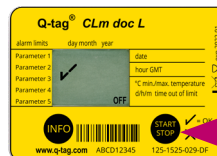
3. Temperature recording / Placing the device

The activated monitor must be placed immediately in its predetermined location. As described in the SOP of your organization. **Important:** It is recommended to "precondition" the device to the desired mean temperature for about 30 minutes before use, especially if no start delay time has been programmed. This is to ensure against false readings during start-up.



4. End of temperature recording

The device may be stopped if the recording shall be finished, e.g. if a shipment has reached its final destination. To do so press and hold the START/STOP button until OFF appears on the bottom right corner of the display. The dot will disappear.

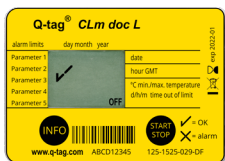


PRESS AND HOLD the START/STOP button **UNTIL OFF APPEARS**

Stop it

OK display

The monitored goods have not been exposed to temperature and time conditions outside the preset ALARM parameters.



ALARM display

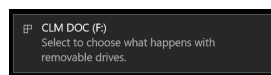
The monitored goods have been exposed to temperature and time conditions outside the preset ALARM parameters.

Important: The ALARM indication cannot be cancelled nor reset.



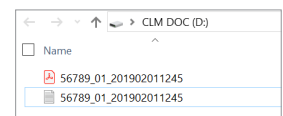
5. Reading the display after the device has been stopped

Plug in the device into any computer via USB interface. Make sure the device is plugged in properly. The following pop up will appear.



Wait sufficient time for the device to generate the ASCII and PDF files (approx. 10 seconds). Double-click the Q-tag CLm doc device (like any external file/drive). Save the PDF and text file on your computer and open the PDF file to see a summary of data and graph or open the text file to view individual temperature recordings (raw data). Proceed according to your company SOP.

Download data



Note: For this process no additional software is necessary.

Learn more on www.berlinger.com/user-manual-clmdoc

Q-tag CLm doc
User Guide Video
SCAN QR CODE:

